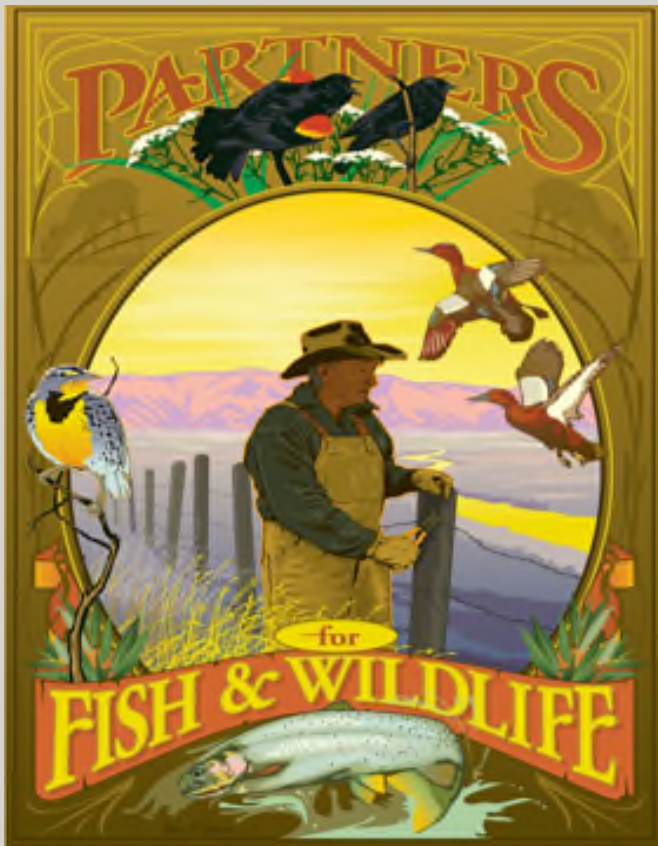


# Partners for Fish & Wildlife Program

Idaho Fish & Wildlife Office – U.S. Fish & Wildlife Service



**Provides technical and financial assistance to landowners interested in restoring fish and wildlife habitat on their land.**



# WHO CAN PARTICIPATE?

- Privately-owned land (not owned by the State or Federal Government)
- Projects are **voluntary**.
- Participating landowners continue to own and manage their land to serve their needs while also improving conditions for fish and wildlife.



# HOW THE PROGRAM WORKS

- The landowner works with the Fish and Wildlife Service's Partners Program biologist and a **local cooperator** to design, fund and implement a project.
- A **local cooperator** is a non-federal agency that receives and manages the funding, handles all contracting and invoicing.



**Boundary Soil Conservation District**



A photograph of two people in a natural, outdoor setting. On the left, a man wearing a light-colored cowboy hat, a red long-sleeved shirt, and blue jeans stands with his hands on his hips. On the right, a woman wearing a wide-brimmed hat and a grey jacket is crouching down, looking towards the ground. The background consists of a dirt path and some sparse vegetation.

# THE LANDOWNER'S ROLE

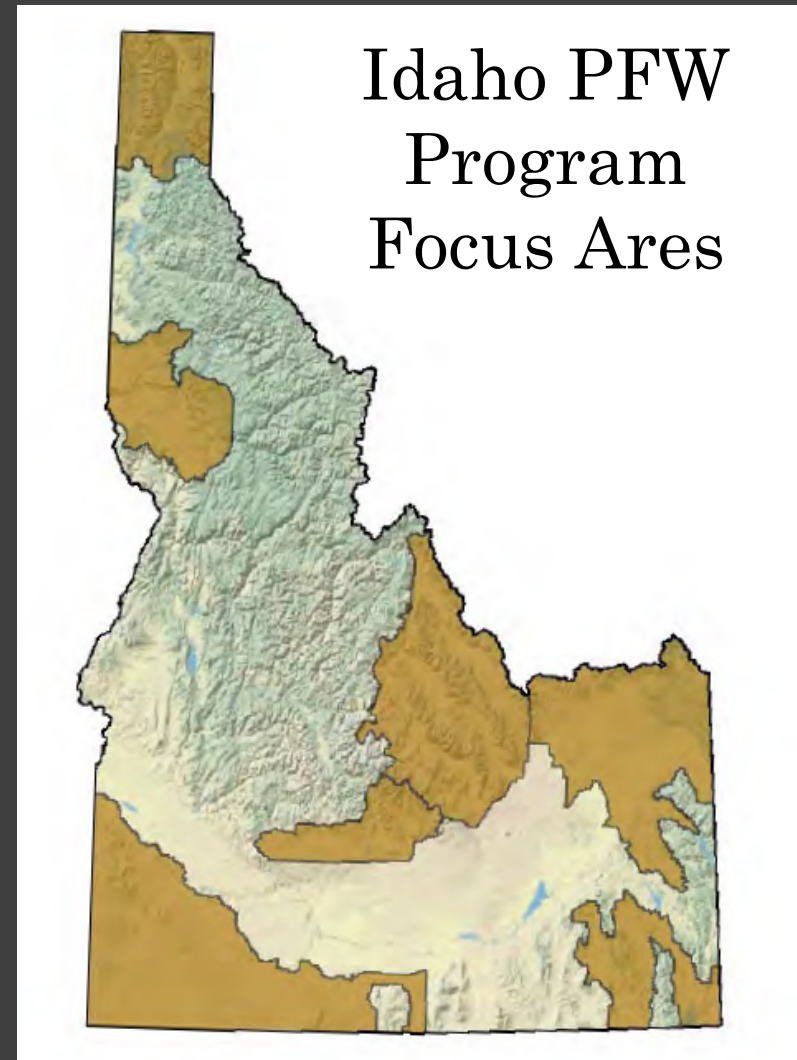
- Sign a landowner agreement to maintain habitat for at least 10 years.
- Allow access, with advance notification, for project implementation and monitoring.

## FUNDING

- Up to \$25,000 per project from USFWS.
- A 50:50 cost-share is targeted, but flexible. Can be “in-kind” or cash.
- Can cost-share with anyone: landowners, federal/state/local agencies, conservation districts, NGOs, businesses, tribes, etc.

# Selkirk Cabinet-Yaak

- Prioritize stream, wetland and riparian restoration to benefit federal trust species (migratory birds, T & E and at-risk species).



# Services

- Plan, implement & monitor
- Identify other partners
- Identify other funding sources
- Permitting

## Types of projects:

- Stream restoration
- Riparian reforestation
- Native grass & forb planting
- Wetland restoration
- Livestock
  - Exclusion fencing
  - Alternative water supply
- Wildlife friendly fencing
- Timber stand improvement (hazardous fuels reduction)

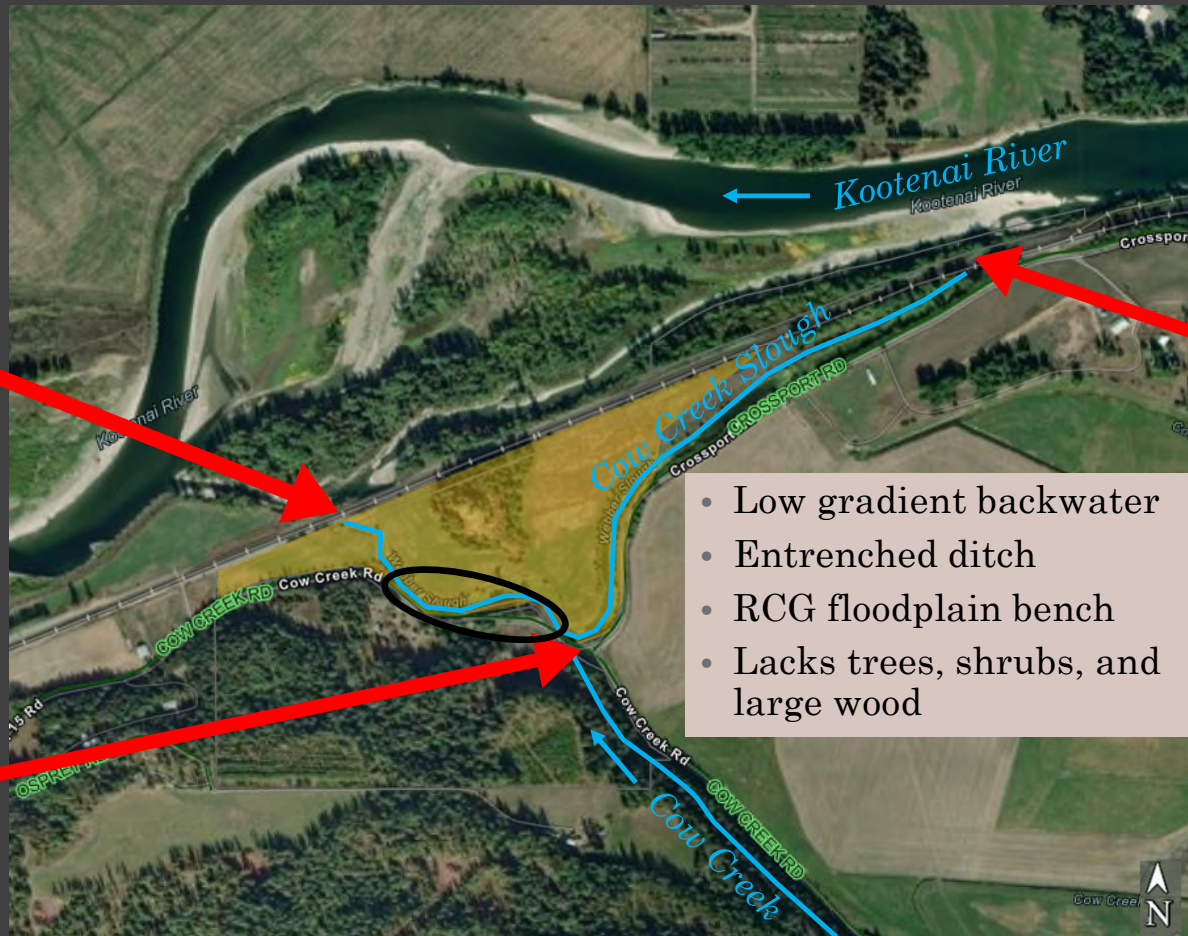


# Cow Creek Riparian Improvement Project

~ 3 miles east of Bonners Ferry

Cow Creek connects to Kootenai R. at railroad crossing

Cow Creek enters slough through perched & undersized culvert



Railroad berm blocks inlet

- Low gradient backwater
- Entrenched ditch
- RCG floodplain bench
- Lacks trees, shrubs, and large wood

**Purpose** – Provide an initial planting phase to increase habitat cover, structure, and diversity that future phases can tie into.



*Site map showing general locations of tree/shrub plantings*




# Cow Creek Partnerships & Funding



+



- Willing private landowner!
- WQPA grant from Idaho SWCC
  - Cost-share 25%
- Boundary SCD sponsored project
  - In-kind: Weed control & conifers
- NRCS technical support
  - In-kind: Planning & site prep
- USFWS technical support
  - In-kind: Planting plan, oversight & maintenance



Installed 15 riparian fence enclosures

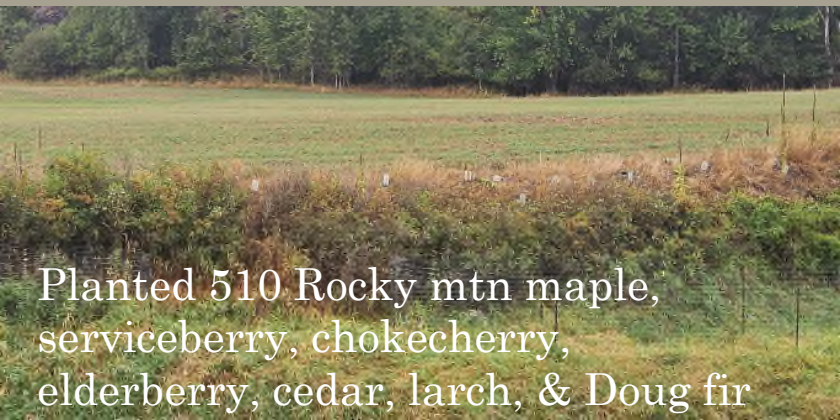
Weed cloth & rodent protectors

This photograph shows a riparian area with a wire fence enclosure. The ground is covered with black weed cloth and white rodent protectors. The background shows a grassy field and a line of trees.



Planted 300 alder, water birch, & dogwood

This photograph shows a riparian area with a wire fence enclosure. The ground is covered with green grass and some trees are visible in the background.



Planted 510 Rocky mtn maple, serviceberry, chokecherry, elderberry, cedar, larch, & Doug fir

This photograph shows a riparian area with a wire fence enclosure. The ground is covered with green grass and some trees are visible in the background.

# Cow Creek Work Plan

## Fall 2023/Spring 2024

# Future Potential Restoration Phases



- Remove invasive RCG and create lower floodplain surfaces for riparian veg establishment
- Modify channel gradient to flush nutrients into the Kootenai River to ‘grow’ food for sturgeon
- Add large wood to increase habitat complexity for native trout

# Cow Creek Fish Passage Feasibility



- Adult Redband Trout (mid March to early June)
- Provide adequate vehicle accessibility
- Consider
  - Construction impacts/ feasibility
  - Traffic effects
  - Long-term maintenance
  - Ecological benefits
  - Flood impacts

*Topography, infrastructure, financial constraints, and stakeholder considerations may limit feasibility.*

# Questions?



U.S. Fish & Wildlife Service

**Brittany Morlin**

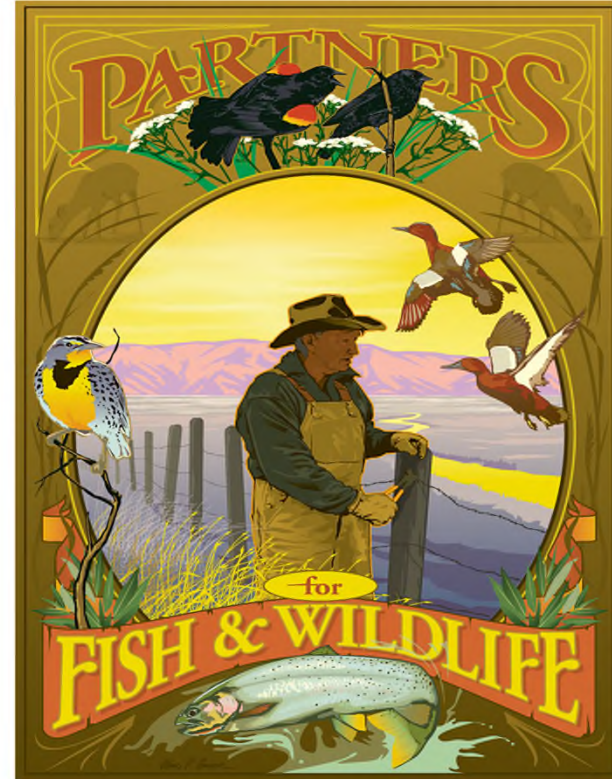
**Partners Biologist**

Idaho Fish & Wildlife Office (208) 510-6356  
3232 W. Nursery Road [brittany\\_morlin@fws.gov](mailto:brittany_morlin@fws.gov)  
Coeur d'Alene, ID 83815

U.S. Fish and Wildlife Service

## Partners for Fish and Wildlife Program

*A Voluntary Habitat Restoration Program for Private Landowners*



Technical and financial assistance available to private landowners who want to improve fish and wildlife habitat on their land.

For more information, please contact Juliet Barenti at (509) 893-8005 or [juliet\\_barenti@fws.gov](mailto:juliet_barenti@fws.gov)

