

Road Work
update for
BFRD 2024



The miles...

- Total of 193 miles completed in 2024

27 miles of reconstruction

131 miles of grading

Few miles of brushing

The \$...

- Total of \$822,000 spent
- \$743,000 spent thru Good Neighbor Authority
- \$68,000 spent thru USFS timber sale projects
- \$12,000 spent thru USFS contracts

Road	Miles	activity	cost (\$k)	contract
Twentymile 408		Reconstruction/Culvert Install/Spot 7 Surfacing	\$90	GNA
Myrtle Cr to Cooks Pass, to Snow Cr to Ruby pass 633, 402,1007, 2646		Reconstruction/Culvert Install/Spot 17 Surfacing	\$540	GNA
Upper Smith and West Fork Cabin 281, 2446		1 Reconstruction/Spot Surfacing	\$40	GNA
Lower Smith, Mission Cr rd 281,272		11 grading	\$10	GNA
Brush Lake Road 1004		3 grading and gravel	\$25	GNA
Copper Lake Spruce 2517, 2504		24 grading	\$16K	USFS Service Contract
Snow Cr Rd, 402, 2646		7 grading/Dust Abatement	\$50.0	USFS Snow Low Timber Sale
Hellroaring roads, 2485, 1374		10 Grading	\$4.0	USFS Hellroaring Timber Sale
Timbukstew Roads 1304, 314, 628		12 Grading	\$4.8	USFS Timbukstew Timber Sale
Camp Stew Roads, 2485, 273, 397		8 Grading	\$3.2	USFS Camp Stew Timber Sale
Idamont Roads, 4402, 314		10 Grading	\$4.0	USFS Idamont Timber Sale
Hogue Mountain 2573		4 Grading	\$1.6	USFS Robin Hood Timber Sale
Deer creek spread creek		3 grading	\$1.8	USFS Service Contract
Spruce Lake		9.2 grading	\$5.4	USFS Service Contract
Copper Ridge		4.9 grading	\$2.8	USFS Service Contract
Copper falls		2.8 grading	\$1.6	USFS Service Contract

Eileen	3 grading	GNA
Myrtle Creek	4.7 grading	GNA
Skin creek	1.8 grading	GNA
DEER Creek	4 grading	GNA
Camp nine	3 grading	GNA
Giles	3.75 grading	GNA
Meadow creek cutoff	4.2 grading	GNA
Queen Mt	9.9 grading	GNA
Baldy	3.6 grading	GNA
Burton creek	6.3 grading	GNA
Soloman Lake	0.8 grading	GNA
Tuin	2.4 grading	GNA
Silver crescent	0.4 grading	GNA
Silver crescent A	0.2 grading	GNA
Silver cerscent B	1.1 grading	GNA
Smith Creek	7.9 grading	GNA
Brush Lake	2.2 grading	GNA
GNA Grading Lines 23 through 39		38 GNA

Black Creek and Cabin Creek AOPs

- Tribs to Boulder Creek on FSR 427 Boulder Meadows Road
- Restored access to 1.3 miles of habitat
- Completed as a stewardship item to Timbuckstew sale
- Approximately \$133,000

Black Creek outlet before and after



Black Creek inlet before and after



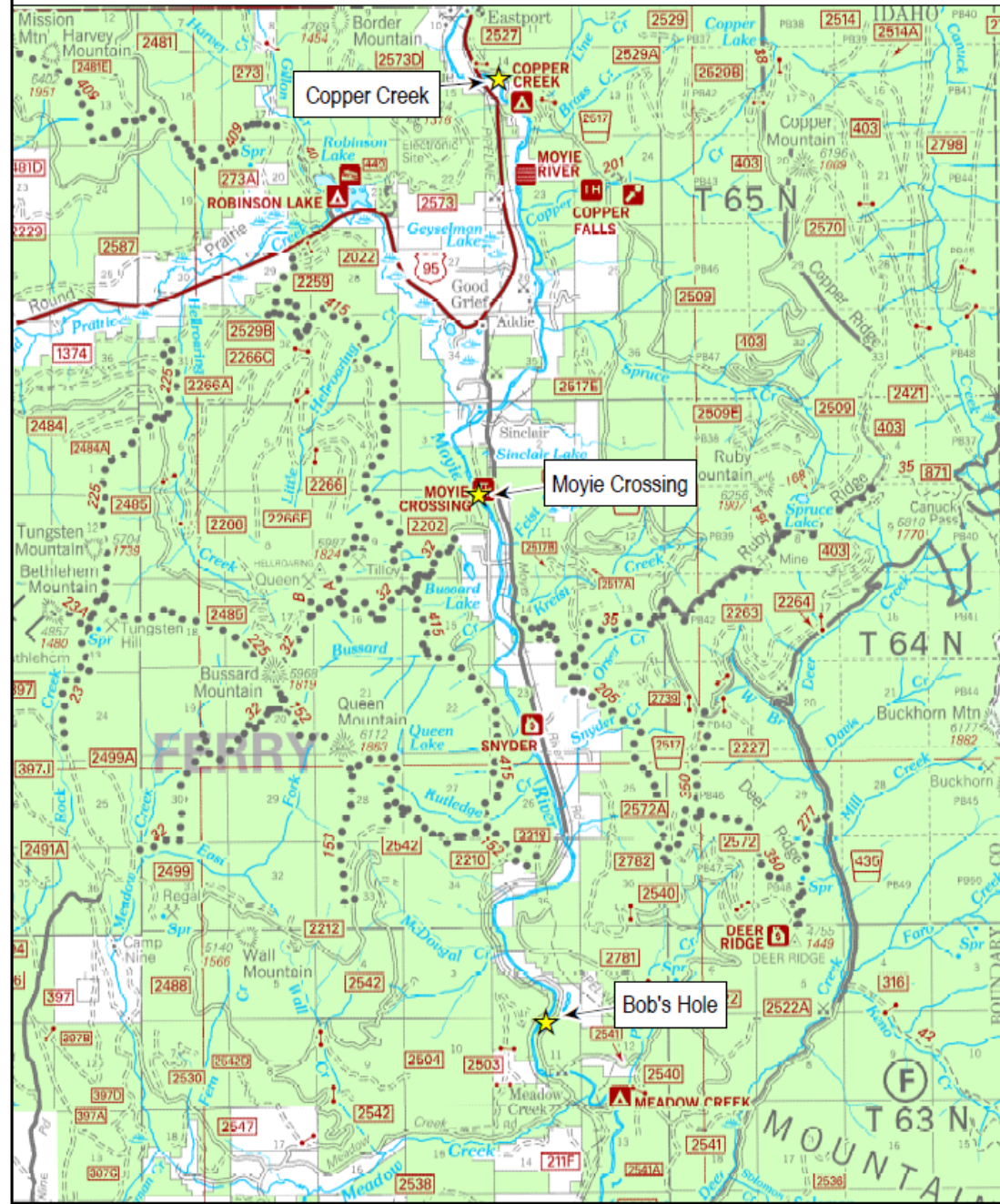
Cabin Creek



Moyie Raft Access Sites

- Improvements near Copper Creek Campground
- Improvements at Moyie Crossing Day Use site
- Improvements near Meadow Creek Campground

Moyie River Access Improvements



Near Meadow Creek - before



Near Meadow Creek



Near Meadow Creek



Moyie Crossing



Moyie Crossing



Copper Creek



Copper Creek



Thanks and Questions?