

An aerial photograph of a vast, dense forest of evergreen trees, likely spruce or fir, covering a hillside. The trees are tightly packed, creating a textured, green surface. The lighting is soft, suggesting an overcast day or late afternoon. The overall tone is dark green and somewhat somber.

2024 Update on BFRD

Project Planning

Katkee Fuels Project

- BA ready for USFWS on December 15th
- Draft EA out for public comment in early January
- First sale offering in 1st Qrt FY26

Young Stand Improvement Project

- DM signed by Tim Gilloon
- Allows for fuels reduction/PCT work at all three northern districts
- First acres will be treated within the WCS landscape in FY25

OSV

- Implementation paused while we reinitiate consultation for wolverine
- NOI on TES (GB, CL, and NW)

Road Work



The miles...

Total of 193 miles completed in 2024

- 27 miles of reconstruction
- 131 miles of grading
- A few miles of brushing

The \$...

- Total of \$822,000 spent
- \$743,000 spent thru Good Neighbor Authority
- \$68,000 spent thru USFS timber sale projects
- \$12,000 spent thru USFS contracts

Road	Miles	activity	cost (\$k)	contract
Twentymile 408		Reconstruction/Culvert Install/Spot 7 Surfacing	\$90	GNA
Myrtle Cr to Cooks Pass, to Snow Cr to Ruby pass 633, 402,1007, 2646		Reconstruction/Culvert Install/Spot 17 Surfacing	\$540	GNA
Upper Smith and West Fork Cabin 281, 2446		1 Reconstruction/Spot Surfacing	\$40	GNA
Lower Smith, Mission Cr rd 281,272		11 grading	\$10	GNA
Brush Lake Road 1004		3 grading and gravel	\$25	GNA
Copper Lake Spruce 2517, 2504		24 grading	\$16K	USFS Service Contract
Snow Cr Rd, 402, 2646		7 grading/Dust Abatement	\$50.0	USFS Snow Low Timber Sale
Hellroaring roads, 2485, 1374		10 Grading	\$4.0	USFS Hellroaring Timber Sale
Timbukstew Roads 1304, 314, 628		12 Grading	\$4.8	USFS Timbukstew Timber Sale
Camp Stew Roads, 2485, 273, 397		8 Grading	\$3.2	USFS Camp Stew Timber Sale
Idamont Roads, 4402, 314		10 Grading	\$4.0	USFS Idamont Timber Sale
Hogue Mountain 2573		4 Grading	\$1.6	USFS Robin Hood Timber Sale
Deer creek spread creek		3 grading	\$1.8	USFS Service Contract
Spruce Lake		9.2 grading	\$5.4	USFS Service Contract
Copper Ridge		4.9 grading	\$2.8	USFS Service Contract
Copper falls		2.8 grading	\$1.6	USFS Service Contract

Eileen	3 grading	GNA
Myrtle Creek	4.7 grading	GNA
Skin creek	1.8 grading	GNA
DEER Creek	4 grading	GNA
Camp nine	3 grading	GNA
Giles	3.75 grading	GNA
Meadow creek cutoff	4.2 grading	GNA
Queen Mt	9.9 grading	GNA
Baldy	3.6 grading	GNA
Burton creek	6.3 grading	GNA
Soloman Lake	0.8 grading	GNA
Tuin	2.4 grading	GNA
Silver crescent	0.4 grading	GNA
Silver crescent A	0.2 grading	GNA
Silver cerscent B	1.1 grading	GNA
Smith Creek	7.9 grading	GNA
Brush Lake	2.2 grading	GNA
GNA Grading Lines 23 through 39		38 GNA

Black Creek and Cabin Creek AOPs

- Tribs to Boulder Creek on FSR 427 Boulder Meadows Road
- Restored access to 1.3 miles of habitat
- Completed as a stewardship item to Timbuckstew sale
- Approximately \$133,000

Black Creek outlet before and after



Black Creek inlet before and after



Cabin Creek





Prescribed Burning

- **Landscape Burning –**
 - Spring – 860 acres in Deer Creek and Boulder Creek
 - Fall – 1,440 acres in Boulder Creek
- **Slash Burning –**
 - Spring – 10 units for 138 acres
 - Fall – 1 unit for 42 acres
- **Pile Burning –**
 - 700 acres of landings and excavator piles in Fall

Timber Sales

Robin Hood

Camp Stew

Hellroaring

Boulder Creek

- Harvest and post-harvest activities continue in the Boulder Dash, Black Boulder, Timbuck, and Idamont sale areas

Westside Restoration Project

- Logging expected to resume in the Snow Lo sale this winter
- Next sale offering (Caribou Snow) scheduled for 4th Qrt FY25



Trail Work

- 142 miles of trail cleared of trees
- 211 miles cleared of trees and brush (353 total miles of trail work)
- 17.5 miles tread reconstructed
- 7 miles of new construction on Kootenai Point Trail, combined with 5 miles built last year creates a new 13 miles of trail from Cooks Pass to Westside Rd.

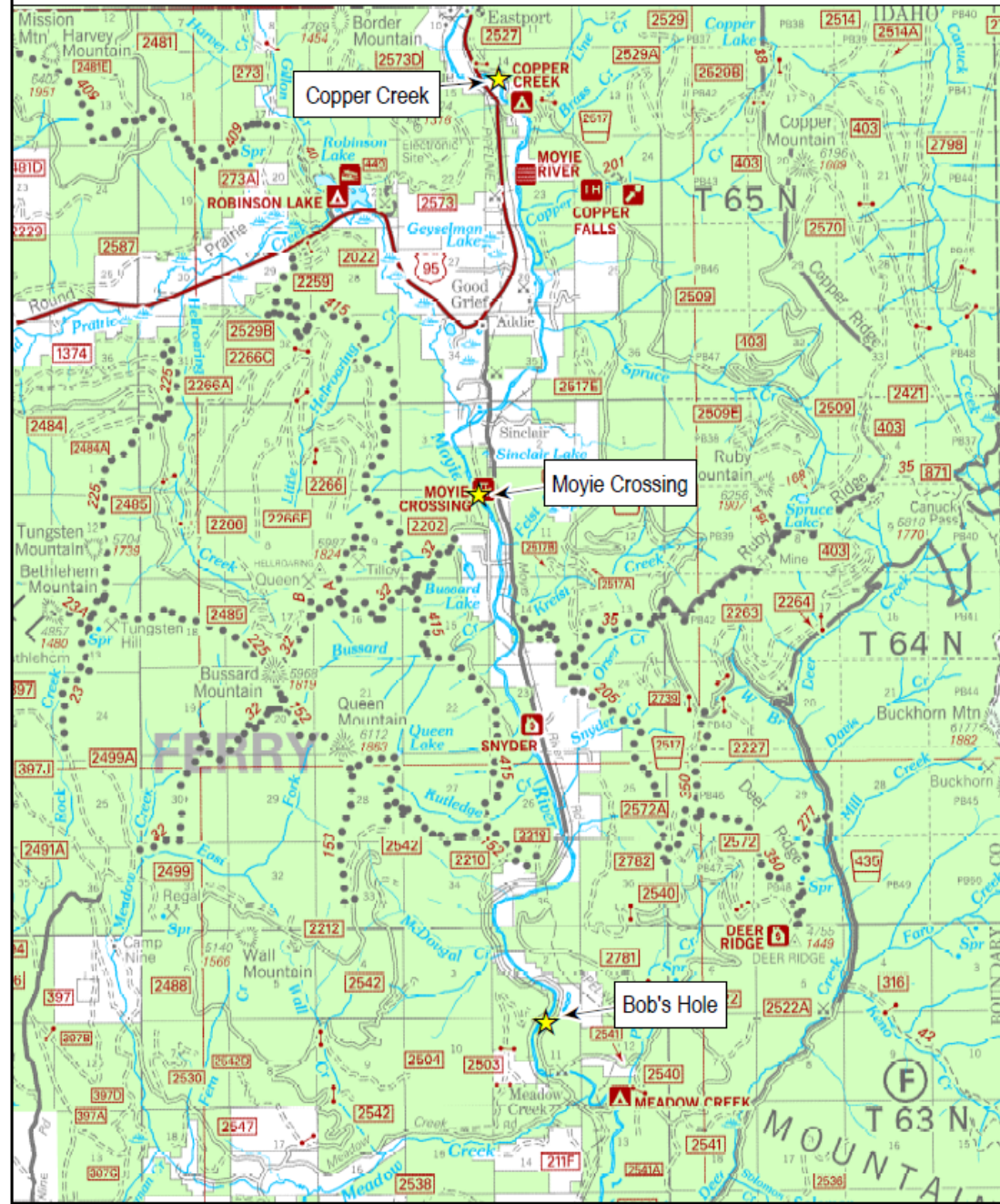


Moyie Raft Access Sites

- Improvements near Copper Creek Campground
- Improvements at Moyie Crossing Day Use site
- Improvements near Meadow Creek Campground



Moyie River Access Improvements



Near Meadow Creek - before



Near Meadow Creek



Near Meadow Creek



Moyie Crossing



Moyie Crossing



Copper Creek



Copper Creek



Thanks and Questions?

